

Relentless Innovation
for your diagnostic confidence

SAMSUNG




**Quickness
Meets
Quality**



EVO Q10

EVO Q10 delivers solutions for Point of Care ultrasound challenges




-  **Easy cleanability**
-  **Built for various Point of Care demand**
-  **User-centric design for Point of Care**
-  **A streamlined workflow**

Easy cleanability

Engineered to withstand the demands of daily clinical practice, the IP22-rated waterproof control panel and chemically resistant materials enable durable, effective infection control



 **Easy to clean**
Easy & effective cleaning for routine daily use



Reliable against spills

Reliable, IP22-rated protection against common fluids such as blood, gel



Durable for disinfectants

Proven compatibility with a wide range of medical disinfectants

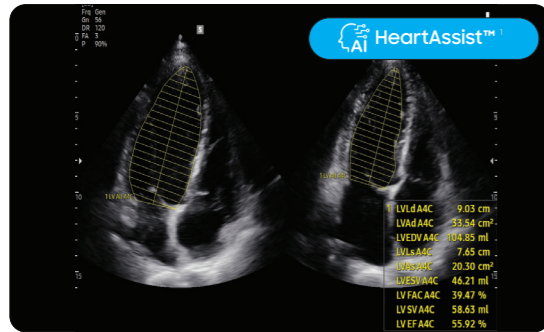
* While the EVO Q10 is available with both a trackpad and a traditional trackball, the IP22 waterproof rating is exclusive to the trackpad configuration.

Built for various Point of Care demand

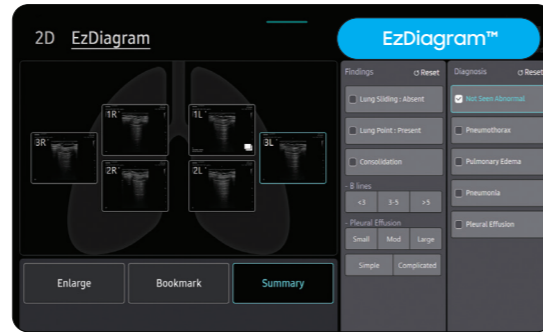


For Emergency & Critical Care

Rapid, accurate assessment for time-critical emergencies, powered by AI and automation



Accelerating cardiac measurements with up to 90% fewer keystrokes

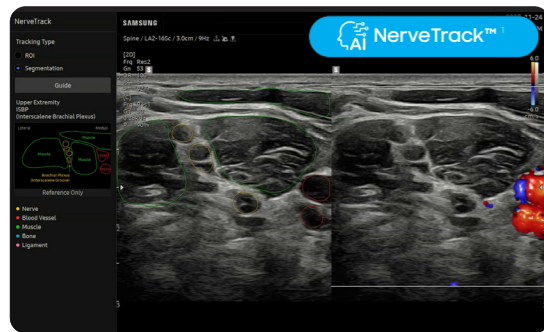


Automating documentation with real-time, standardized diagrams for EM/CC protocols



For Anesthesia

Clear visualization of the target nerve to support safe and precise blocks



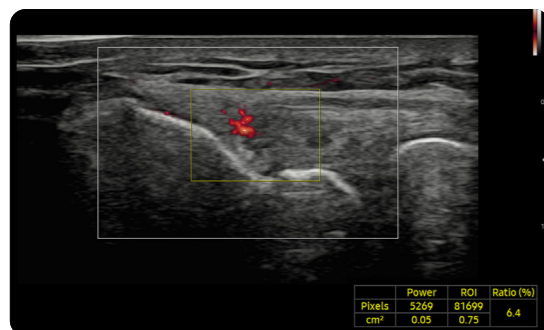
Nerve segmentation of the ISBP in DualLive

Highlighting nerve regions automatically in real-time to support procedural precision

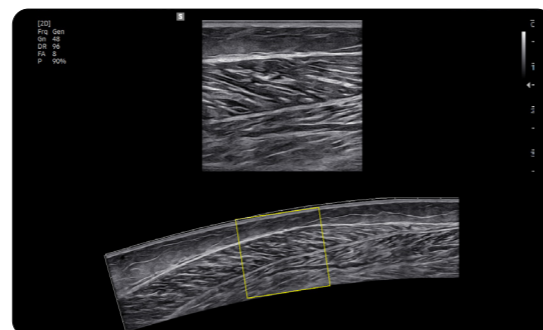


For Musculoskeletal

High-resolution visualization of fine anatomical structures for a more confident diagnostic evaluation



Lateral elbow with Vascularity Index in MV-Flow™¹

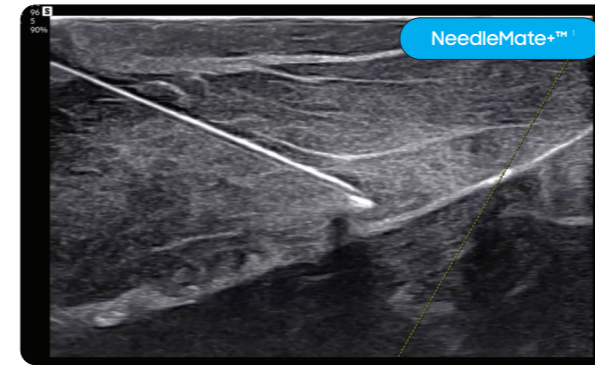


Calf in Panoramic+¹

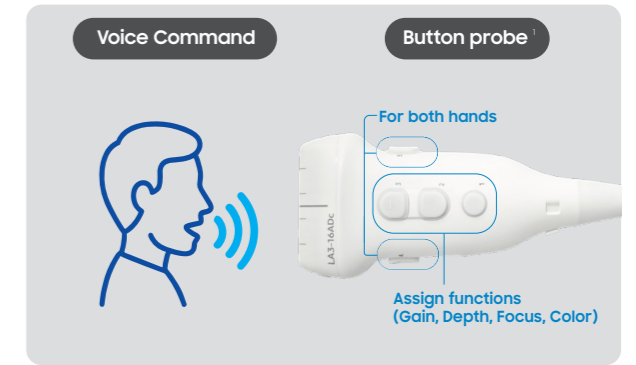


US-Guided Procedure solutions

Intelligent tools for efficient procedural control



Enhancing needle tip visualization for confident and precise targeting



Enabling panel-free system control to maintain focus and sterility during procedures

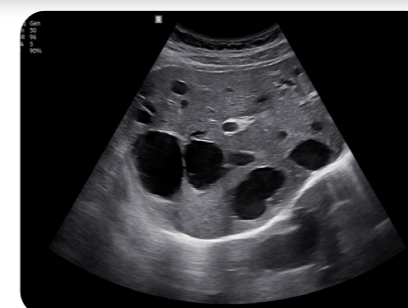


Improving procedural accuracy and comfort with slim probe, L3-22¹

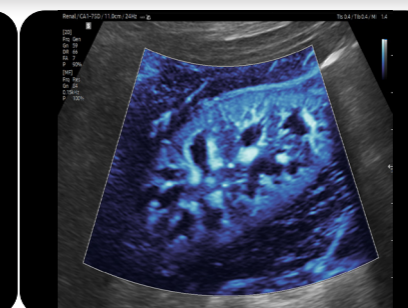


Ensuring flawless touchscreen accuracy, even with sterile covers or gloved hands

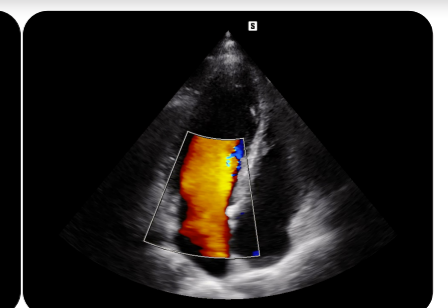
Outstanding image quality for faster, more confident diagnostics



Multiple liver cysts



Kidney in MV-Flow™¹



Apical 4 chamber view in Color

User-centric design for Point of Care



Durable design

Enhanced durability with a magnesium frame offering up to 2.5 times greater strength for reliable performance in unpredictable situations

* Compared to previous model

Flexible positioning

Flexible positioning with 300 mm height adjustment and 20°–60° tilting, ensuring optimal access in various clinical environments

Compact & mobile design

Compact, mobile design delivering exceptional maneuverability even in confined spaces

Long battery time ¹

Go almost a whole working day on a single charge

*Up to 7 hours of battery life during live scanning; actual performance may vary depending on usage and environment.

A streamlined workflow

Streamlines workflow with mirrored touchscreen

MirrorTouch™

ONE-CLICK SOLUTION

·Lung ·FAST ·Pericardial ·Aorta ·Penetration

Accelerate 2D image optimization with a single touch

EzStructure™

Integrated IT solutions for ultrasound ecosystem

Real-time image sharing and remote control solution

SonoSync™ ¹

Centralized ultrasound ecosystem management solution

S-Hub™ ¹

*SonoSync™ is a function for image sharing, not for diagnosis

A comprehensive range of transducers



Button probe · Assign functions · for both hands · Panel-free operation

| | | |
|---------------------|---|--|
| Convex | CA1-7SD S-Vue OB, Abdomen, GYN, MSK, Pediatric, Thoracic, Vascular, Urology, Emergency | |
| | CA2-8AD OB, Abdomen, GYN, MSK, Pediatric, Vascular, Urology, Emergency | |
| | LA2-16Sc Button S-Vue Abdomen, MSK, Small Parts, Vascular, Pediatric, Emergency | |
| | LA3-16ADc Button Abdomen, MSK, Small Parts, Vascular, Pediatric, Emergency | |
| Linear | LA2-16S S-Vue Abdomen, MSK, Small Parts, Vascular, Pediatric, Emergency | |
| | LA3-16AD Abdomen, MSK, Small Parts, Vascular, Pediatric, Emergency | |
| | LA3-22AI MSK, Intraoperative, Dermatology | |
| | L3-22 MSK, Small Parts, Vascular, Pediatric, Dermatology | |
| | LA2-9SD S-Vue Abdomen, MSK, Small Parts, Thoracic, Vascular, Pediatric, Emergency | |
| Phased Array | PA1-5AED Abdomen, Cardiac, TCD, Pediatric, Vascular, Thoracic, Emergency | |
| | PA2-9S S-Vue Abdomen, Cardiac, TCD, Pediatric, Vascular | |
| | PA3-15S S-Vue Abdomen, Cardiac, TCD, Pediatric, Vascular | |
| TEE | MMPT3-7 Cardiac | |
| | TA2-9 Cardiac | |
| CW | CW6.0 Cardiac, Vascular, TCD | |
| | DP2B Cardiac, Vascular, TCD | |

SAMSUNG MEDISON CO., LTD.

© 2026 Samsung Medison All Rights Reserved. Samsung Medison reserves the right to modify the design, packaging, specifications, and features shown herein, without prior notice or obligation

* This product, features, options, and transducers may not be commercially available in some countries.

* Sales and shipments are effective only after the approval by the regulatory affairs. Please contact your local sales representative for further details.

* This product is a medical device, please read the user manual carefully before use.

1. Optional feature which may require additional purchase.